

ABBEY

1+1 Bridging Programme

- Intensive 1-Year A Level and IELTS Study
- Top Universities (UK & Hong Kong) Education Pathway
- Professional Tuition Support by Native English Speakers
- Safe, Clean and Comfortable Accommodation Conditions



Contents

Introduction

- 3 Welcome from ABBEY
- 4 ABBEY 1+1 Bridging Programme At a Glance
- 5 Features of the Programme
- 6 Why A Level?
- 8 Who should take the programme?
- 10 Why Bangkok?

Our Programme

- 12 Route 1: Rasami British International School Bangkok
- 17 Route 2: St. Stephen's International School Bangkok
- 20 Tuition Support
- 23 Accommodation and Catering
- 26 Daily Schedule
- 27 Weekend Programme

Key Information

- 28 Programme Summary
- 29 Application Process
- 30 Contact Information

Welcome from Director

Welcome to ABBEY Education Group,

Here at ABBEY, we emphasise The ABBEY Way: respecting and celebrating individuality. We firmly believe that every child is unique and we strive to attend to their individual needs, ensuring that they all achieve their dreams at school and in life.

At every step of your academic journey, our consultants are here to help and empower you to make the best choice for yourself. Located in Hong Kong, a highly globalised city, we work together with prestigious institutes around the world to provide opportunities for students to experience different education systems and become a global citizen. We provide after-school tutoring services with a learning environment that is unique and enriching. Children will learn more and better, but you have our promise, that we will never add stress to their already demanding school life.

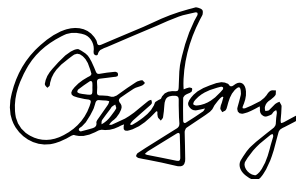
For students who wish to study abroad in the UK, ABBEY consultants are here to ensure a smooth and seamless transition process and quality services. From assessing a child's personality and ability to finding a school that best fits him/her, you can rest assured that the legwork and paperwork will be taken care of.

We are very proud to announce our newest and one-of-a-kind one-year A Level programme, ABBEY 1+1 Bridging Programme, in partnership with St. Stephen's International School and Rasami British International School. We believe that one little mishap in an exam does not mean anything. Our experts examined the problem and have developed this plan specifically to help students realise their dreams.

Under this programme, students will receive small-class intensive lessons along with after-school tuition from our native English-speaking teachers. This programme is designed to help students complete the A Level and IELTS qualification in one year, and more importantly, to enable them to apply for competitive programmes, including medicine, law, pharmacy, business and engineering, at universities in Hong Kong, the UK, Canada and Australia.

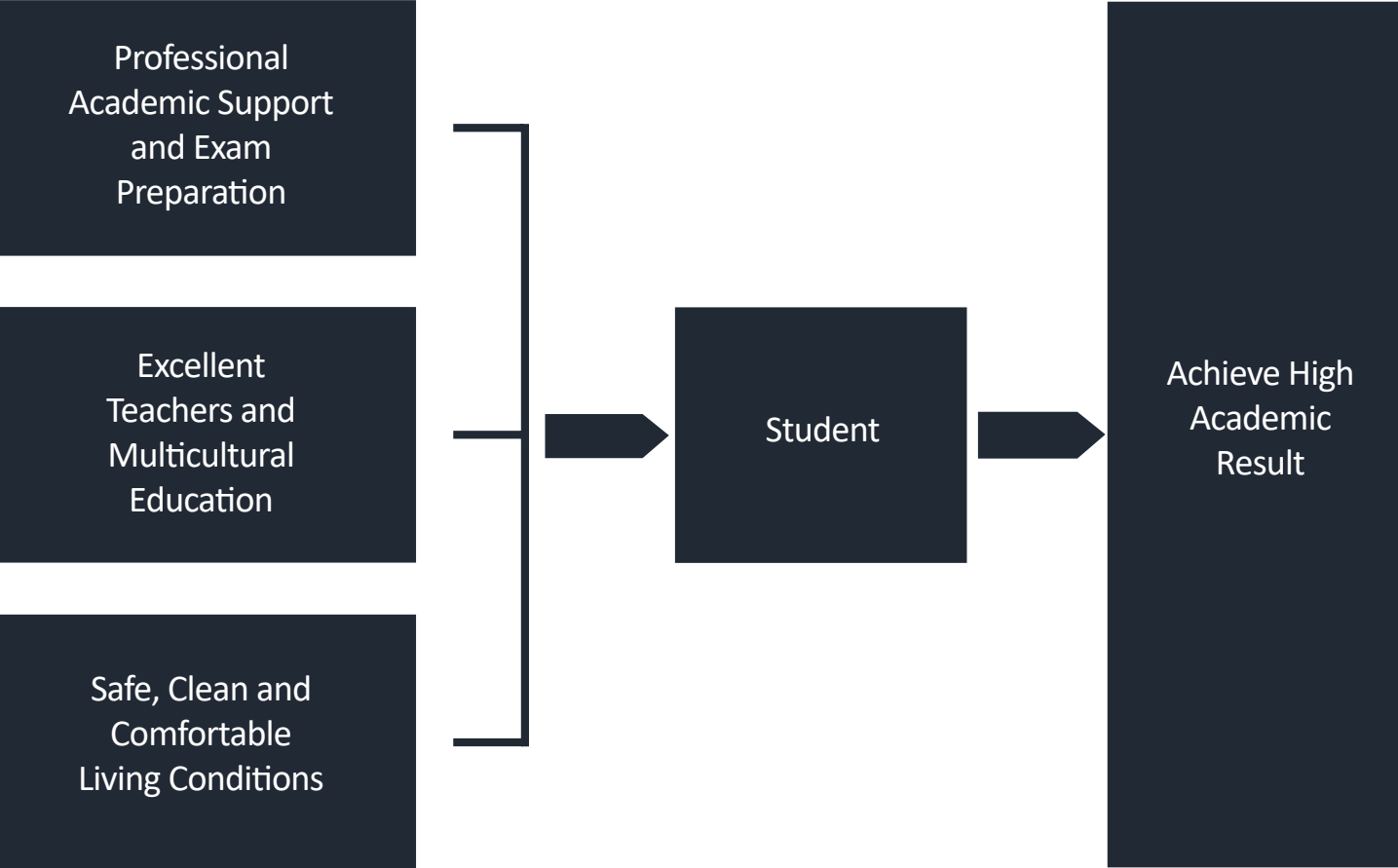
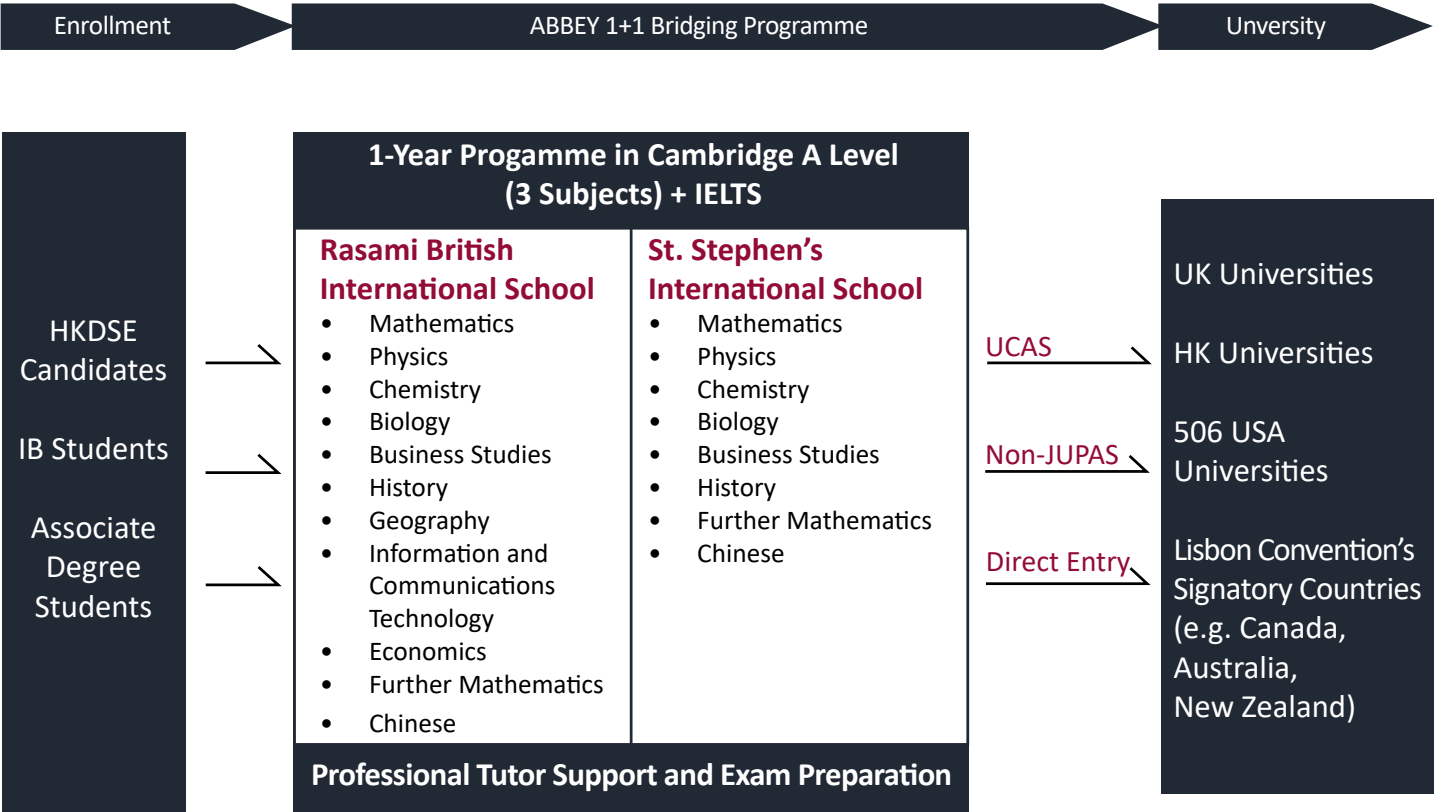
We understand that student accommodation and welfare is the prime concern for parents. ABBEY addresses the problem by offering premium accommodation with full-catering services. The newly renovated accommodation offers 24-hour security amongst many other quality services. Parents can rest assured that their children will worry for none and can focus solely on their studies and realising their dreams.

We invite you to learn more about the ABBEY Education Group and our one-year A Level programme by visiting our website and contacting our consultants. You are also welcome to stay connected with us on Facebook. I am sure you will be impressed by our excellence and devotion. We look forward to meeting you in our programme.



Oscar Tong
Director of ABBEY Education Group

ABBEY 1+1 Bridging Programme At a Glance



Features of the Programme

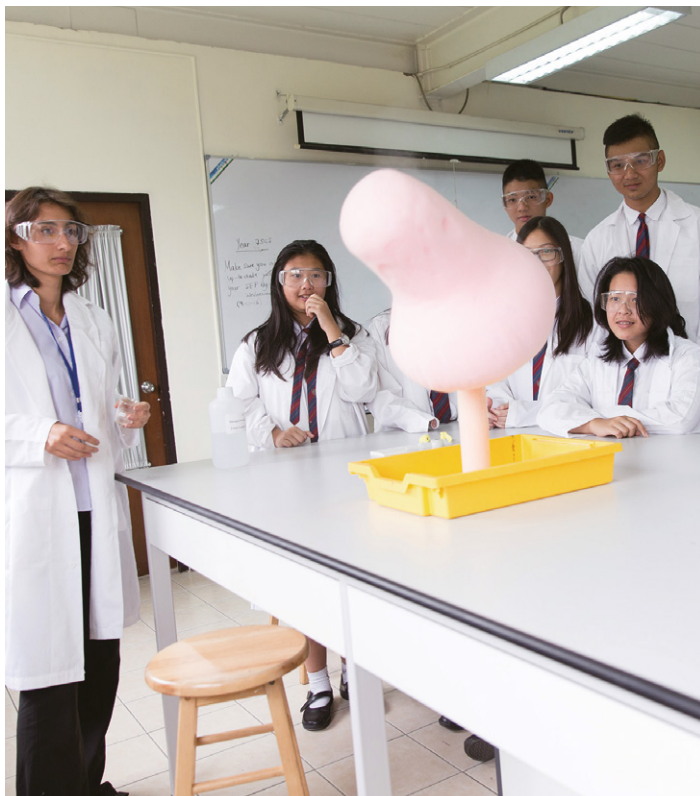
The ABBEY 1 + 1 Bridging Programme is a 10-month programme by which students receive education in three Cambridge A Level subjects and intensive IELTS training. Examination results subsequently obtained will enable students to apply to universities in the UK, Hong Kong and Lisbon Convention Signatory Countries. Students enrolled on the programme will study either at the St. Stephen's International School or the Rasami British International School. Students take Mathematics and two other subjects of their choice; they also have the option to take an additional subject in either Further Mathematics or Chinese.

International Recognition

Cambridge A Level is accepted as entry qualifications to universities around the world. Students are able to continue their higher education in the UK, HK, USA, Canada or other countries.

Excellent Faculty and Staff

Both St. Stephen's International School (SIS) and Rasami British International School (RBIS) boast decades of experience providing quality education in Bangkok. Teachers of SIS and RBIS are all native English speakers and are well qualified in teaching Cambridge Advanced Level Syllabus, which enables them to make use of their expertise to help students gain an in-depth understanding of the syllabus and develop an interest in those subjects. Ultimately, students will be well-prepared for their studies at the university.



Exam-oriented Tutor Support

Students will receive two hours of individual tuition with native English teachers every day after school. Every Saturday, students will attend mock exams to familiarise themselves with the AL exam format. Monthly reports will be compiled for students and parents to keep check of their study progress.

Study-life Balance

Students, as members of the school, will take part in after-school extra-curricular activities every day. In the weekends, students have the option to join English sightseeing tours to enjoy this vibrant city, to socialise and to use English in an everyday-life setting.

Comfortable Living Environment

Students will share a comfortable en-suite room for two which also comes with a pantry. To relax and temporarily escape from the intensive study schedule, students will have access to a gym and a swimming pool on the premises where they reside. Catering services ensure students' health by providing nutritious meals.

Visit Friendliness

Parents can take advantage of the geographical proximity of Bangkok and visit the students by taking a 3-hour flight from Hong Kong. Under certain circumstances accommodation can be arranged for overnight stays in the same housing complex for students.



Cambridge A Level - An International Gold Standard

Why Cambridge A Level?

Advanced (A) Level qualifications are well established and often termed the 'Gold Standard' in pre-university education. Cambridge offers a wide range of A Level subjects which prepare students for higher education. Cambridge A Level is accepted for entry into universities around the world. Many students from Thailand study A Level, then go on to study in UK, USA, Australia, Singapore, Canada, Hong Kong and many European countries.

University Destinations

UK

All Universities accept the Cambridge A Level using the UCAS points conversion.

HK

All tertiary institutions in Hong Kong accept the Cambridge A Level through Non-JUPAS admissions

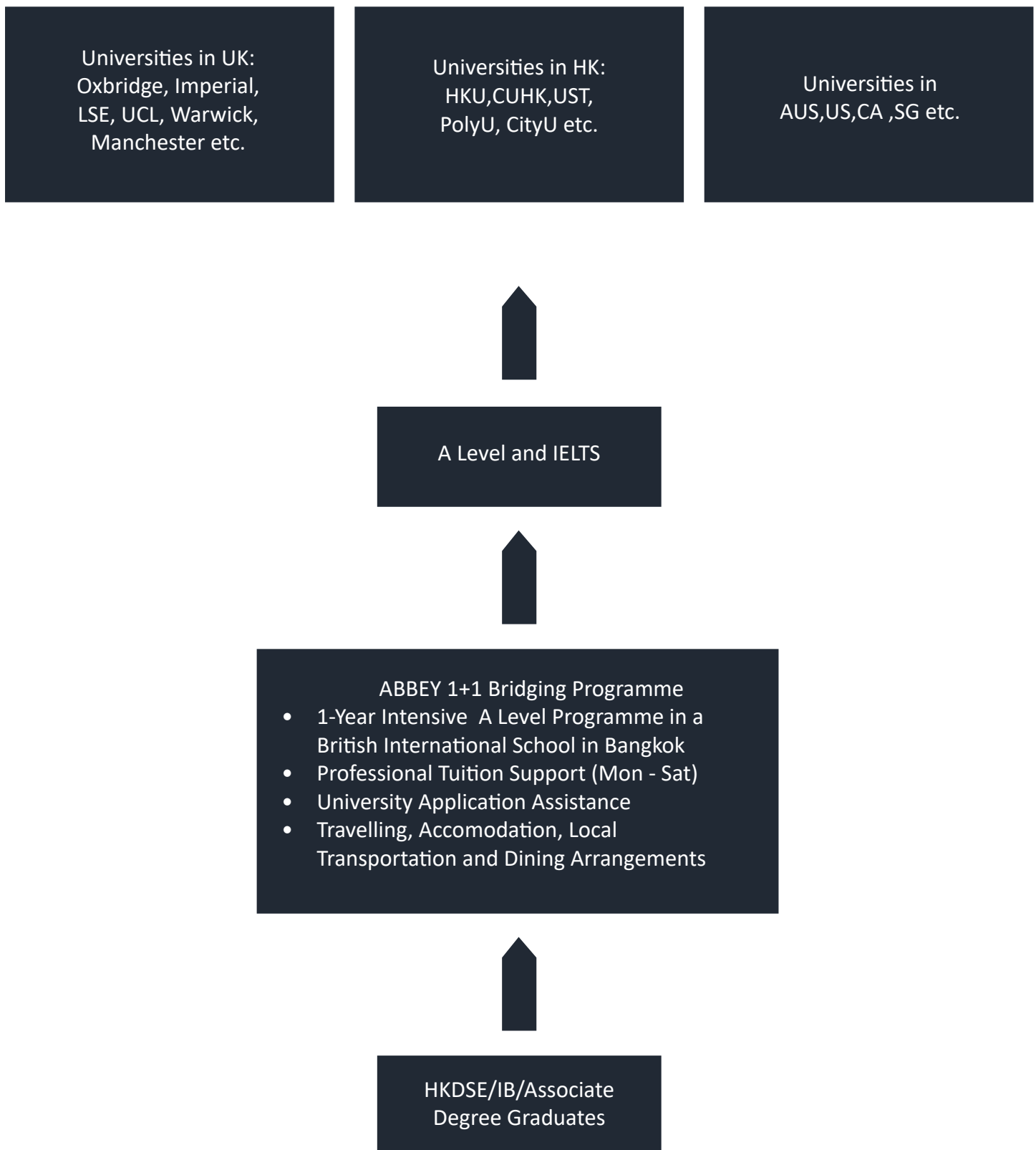
USA

506 universities accept A Level along with other entrance tests or interviews dependent on the institution.

The Lisbon Convention (an international agreement signed by 50 countries and international organisations, including The European Union, USA, Australia, Canada, Israel and New Zealand) facilitates the recognition of foreign studies among the signatory countries.

To check which institutions in other countries accept A Level visit:
recognition.cie.org.uk

Path to Higher Education



Who should take the programme?

Student A

"I have worked so hard for my DSE and have received an overall of 5 and above. I cannot enroll into HKU/CU/UST because I failed Chinese. I chose ABBEY 1+1 Bridging Programme because I wanted another chance to enter university."

– Joey

Often, Hong Kong students are diligent and highly capable. However, one little mishap in the HKDSE, particularly in Chinese and Liberal Studies, can jeopardise their chances for further education. Our programme is designed primarily to relieve students of this obstacle in pursuing their preferred educational opportunities at their preferred universities.

Student B

"I screwed up in the HKDSE. With a total score of 15 for my best 5 subjects, and no IELTS qualification, I couldn't get into any local universities. I couldn't afford to waste any more time. I chose ABBEY 1+1 Bridging Programme because I would be able to focus on my studies and gain both A Level and IELTS qualifications in just one year."

– Christy

ABBEY 1+1 Bridging Programme provides an all-round service that helps students save time and focus on their studies. Not only will you be receiving tuition from experienced and engaging teachers from the UK, but also accommodation and catering services. This way you will not have to worry about household chores, and can concentrate on your studies.

Student C

"I took the International Baccalaureate (IB) Diploma because I wanted to study abroad. I excelled in the Science subjects but not so much in the Humanities. The added score cannot get me into a Pharmacy programme in the UK! ABBEY 1+1 Bridging Programme is my best shot at this stage."

– Michael

IB is great and widely known for its intercultural programmes. Students are encouraged to think independently and be self-motivated. However, compared to IB, particularly for students who wish to study Science or Engineering at the university level, A Level offers a more in-depth basic knowledge that can better prepare students for university. Also, students will be free to choose subjects according to their strengths and interests.



Student D

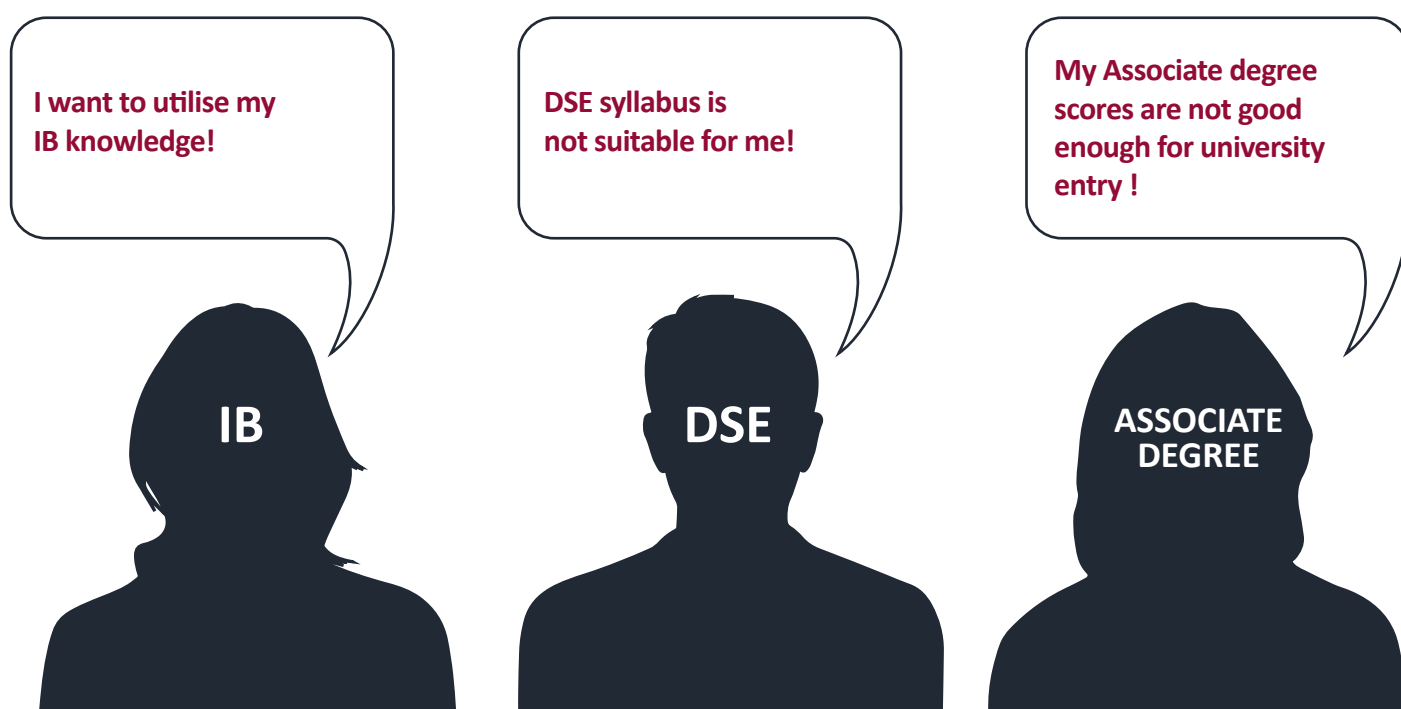
"I have just finished my first year of associate degree in Hong Kong. I feel like it has been a mistake and don't know if I should carry on with the second year. ABBEY 1+1 Bridging Programme is what I need." – Peter

Often, students who could not enter universities in Hong Kong opt for associate degrees, hoping that they could get into a university after 2 years. Unfortunately, after paying tuition fees for 2 years, you realise that only a small percentage of students right at the top make it to university. Many of those who are not the top of the class begin to have doubt after the first year as they fear they cannot get into the programme's partner university and most universities overseas do not accept their associate degree as an official qualifications. The one-year A Level programme would be a great alternative for them. Not only are A Level and IELTS universally accepted in most English-speaking countries, including the UK, Canada and Australia, but the students also get to choose their subjects in the A Level and plan their future, at university and in life, accordingly.

Student E

"I am studying in a nursing school. After the HKDSE, I didn't know what to do. I wanted to get into university but my score was too low. I didn't want to do an associate degree because I fear that there is no future prospect if I cannot ultimately enter university. I don't like being a nurse though. I just wish I could choose again." – Vivian

Even if you are in training, you are eligible for our one-year A Level programme (given that you have a DSE result). Many students enter into a field only to realise that they do not have the passion for it. Re-taking DSE would not solve your problem, but with ABBEY 1+1 Bridging Programme, you can! It takes only one year to finish the programme. By the end, you will not only have an A Level qualification that is accepted world-wide by universities and companies, but also an IELTS qualification that would help whether you want to carry on studying or start working. It is the best opportunity for you to change the course of your life.





Programme Location: Bangkok, Thailand

Why Thailand?

There are currently 176 English-medium international schools in Thailand providing education for over 65,000 pre-school, primary and high school students with over 7300 teachers based in the country. With strong government support for the development of new international schools, Thailand is becoming a centre for international education in South East Asia.

Why Bangkok?

A Cosmopolitan City

Bangkok is one of the most exciting and vibrant cities in the world. As the City of Angels, Bangkok is the perfect combination of history and modernity with many historical attractions, shopping malls and world-class restaurants. Excellent traffic systems such as the BTS SkyTrain, MRT Metro and Chao Phraya Express Boats make it easy to explore the city of Bangkok. Bangkok is not only one of the top-ranked tourist destinations by international visitors but also a great place for international education.

Steady Economic Development

Thailand has a locational advantage for its close proximity to China and India, and also its location in the centre of the ASEAN Region. Many multinational companies such as Uber, Google and PricewaterhouseCoopers are attracted by it and locate their offices in Bangkok for business development in Asia. Benefiting from China's "One Belt, One Road" Initiative, Bangkok is expected to experience a steady development in trade and financial investment, infrastructure facilities and international education .

Rapid Development in International Education

According to the International School Consultancy Group, the number of international schools in Thailand has increased dramatically in the past two decades. In fact, it is mainly due to Bangkok's high livability that attracts both international students and experienced educators from all around the world, thus promoting Thailand as Southeast Asia's international education hub. There are now a number of world class international institutions with excellent academic standards and modern facilities in Thailand. Most of which are located in the city of Bangkok and its metropolitan region.

Outstanding Academic Performance

International schools in Bangkok offer a wide range of curricula which strictly follow the international education systems such as British system, the American system or the International Baccalaureate (IB) system. In fact, many students in Thailand achieve outstanding results in A Level and successfully get into top universities in the world. In 2015, eighty-three students in Thailand received the Outstanding Cambridge Learner Awards in Southeast Asia issued by Cambridge International Examinations in recognition of their exceptional achievement in A Level exams, eight of whom have achieved Top in the World.

Closeness to Hong Kong

Bangkok is only a 3-hour flight away from Hong Kong and the time difference between Thailand and Hong Kong is one hour.



Route 1:

Rasami British International School Bangkok

Rasami British International School Bangkok (RBIS), established in 1971, is a dynamic, caring, co-educational independent school in Bangkok catering for approximately 200 students from 24 different countries. RBIS is strongly committed to school improvement and to delivering a high quality education to students. RBIS's philosophy of education is based on respect for the individual and recognising the diverse cultural backgrounds within the school. RBIS aims to develop every child as a successful learner; a confident individual; and a responsible and respectful citizen of the world.

Academic Excellence

RBIS students' performance in Cambridge International Examinations (CIE) and International General Certificate in Secondary Education (IGCSE) are consistently above the UK average and many other international schools. RBIS is proud to offer a wide range of IGCSE options and an A level programme which would enable students to choose to study in the UK, US, HK, and many countries around the world.

Quality Assurance & Accreditation

RBIS is very proud to be one of very few schools which has been accredited by Education Trust, UK or EDT. EDT is a world class educational organisation who also provides education services to government both in the UK and across the world. RBIS is also accredited by the Office for National Education Standards and the Quality Assessment, Thailand. The school is also a member of International Association of Thailand (ISAT) and is a Cambridge University approved Examination Centre.

Highly Qualified British and International Teachers

The school has a good curriculum that is imaginative, innovative and interactive. It provides a wide variety of projects that help students to adopt skills and knowledge across a range of subjects and fulfill their academic potential. RBIS teachers draw upon relevant aspects of the world beyond school, plan well-structured lessons to help students make meaningful connections between their learning and the real world.

Extensive Choice of A Level Subjects

RBIS offers a wide range of flexible study options for students: Mathematics, Further Mathematics*, Biology, Chemistry, Physics, Business Studies, Economics*, Geography, History and Information and communications technology (ICT). Additionally, all students will receive IELTS support to ensure they meet the English language requirements of competitive undergraduate programmes.

Academic Support

Students will receive personal advice and feedback from their teachers through progress assessments. The School will also provide additional help with application process for university, including intensive coaching for interviews, tailored advice on personal statements.

Extra-Curricular Activities

RBIS provides a wide range of enriching extra-curricular activities and extra study session which ensure that students can diversify their interests and broaden their horizons, build self-esteem and team spirit and shape their personality and leadership qualities.



RBIS Headmaster and Teachers



David Jones
Headmaster

BSc with QTS commendation,
Lancaster University, UK
Certificate in Educational Leadership ,
Bath Spa University, UK

Having taught at prestigious independent schools in the UK, Middle East and Thailand I am proud to be the Headmaster of RBIS, Bangkok. My experience of leading both IB and A level, day and boarding schools equips me well to lead RBIS to continue its journey; always striving to do better. I believe that good is not good enough and that pedagogy is an area that is continually evolving. This means RBIS is constantly self reflective, inquisitive and progressive as it strives to aim even higher. Aim Even Higher is our school motto and RBIS students also need to approach their learning with self reflexion, curiosity and a growth mindset. I am excited to be collaboration with Abbey Education Group in offering the one-year A level to students who have completed the HKSD. My staff will work hard to help our Hong Kong students achieve their goals and guide them through the next stage in their education and personal development.



Julie Dalrymple-Alford
Information & Communication Technology

Bachelor of Arts (Hons) in Modern Languages,
University Central, UK
PGCE in ICT, Lancaster University, UK

Ms Alford joined RBIS this academic year. She has had varied experience in several successful schools over the last thirteen years in England and Spain. As well as helping her student to achieve outstanding examination results she has a very clear understanding about how students learn and how to maximise their potential. She is passionate about teaching and committed to an approach to learning which focuses on the individual and their personal needs, aspiration and learning style. Ms Alford really enjoys working in the independent international sector and benefits from the cultural and intellectual exchanges that emanate from that contact. She loves learning languages and is fluent in Spanish and looking forward to learning some Thai. She moved to Bangkok with her son and is delighted to join the RBIS community. In her recreational time she is looking forward to exploring Thailand's many marvels and exotic beaches. As an avid horse rider, she also takes a riding activity with students at the local club.



Ibrahim Brookes
Business/Humanities

Bachelor of Arts in
Philosophy and Social
Policy, University of Kent,
UK
Postgraduate Certificate
in Education, University
of London, UK

Originally hailing from West London, Mr Brookes studied Social Policy and Philosophy at The University of Kent in Canterbury before returning to London to complete his PGCE at The Institute of Education, part of University College London. For three years Mr Brookes taught in an inner-city school, beginning as a classroom teacher of Citizenship and PSHE eventually progressing to Assistant Director of Learning for Humanities. In that time, he taught subjects across the faculty including History, Geography and Business. Throughout his teaching career, he has upheld high expectations of all his students and a personal desire to see each and every one succeed both in and out of the classroom. In his current role here at RBIS, he teaches Humanities and Business Studies from KS3 to A Level. Mr Brookes' favourite aspects of teaching at RBIS are the small class sizes which allow him to personalise learning for each student and the diverse mix of teachers and students that make up our small but well-formed family.



Tom De Smet
Geography

Bachelor degree in
Secondary Education
(Major in English as
a foreign language,
Minor in Geography and
Western History), Ghent
University, Belgium

Mr De Smet has been working in Thailand for 10 years now, of which 8 years at RBIS as the Geography and History teacher. What he just loves about our school are the small class sizes, which consistently optimise students' learning. Besides that he really likes the diversity of cultures and backgrounds an international school has to offer. It is very enriching and he feels he is learning something new every day. Mr De Smet's philosophy is that each student is a unique individual who needs a secure, caring, and stimulating atmosphere in which to grow and mature emotionally, intellectually, physically, and socially. It is his desire as an educator to help students meet their fullest potential in these areas by always providing an environment that invites a sharing of ideas.



Phillip Robinson
Mathematics & Physics

Bachelor (Hons) Civil and
Structural Engineering,
University of Plymouth,
UK
PGCE Upper Primary
with QTS, Bath University
College, UK

Mr Robinson has over 10 years experience teaching mainly IGCSE and A Level maths and physics as well as Year 7 science. He originally started his career as an engineer after graduating from university before going back to university to train as a teacher. He spent a few years teaching in the UK before moving to Cambodia to teach in an International school and from there moving to Thailand. He strongly believes that everyone can learn mathematics and come to love the beauty of the subject and how nature and the universe can be described in the true international language of mathematics. In his free time Mr Robinson likes to spend as much time outdoors, either in the countryside trekking or doing his favourite sport of sailing.



St. Stephen's International School

"Where East meets West"



Route 2:

St. Stephen's International School Bangkok

Founded in 1998, St Stephen's International School Bangkok (SIS) is a private co-educational international school serving international communities in Bangkok. SIS is proud to educate children and promote academic achievements with a broad focus on internationalism links to preparation and support for university applications where SIS alumni are represented in the UK, across Europe, Asia, Australia and the USA in a range of top class universities.

Academic Excellence

With excellent teaching quality and stimulating learning environment, the students of SIS have built a long track record of outstanding A-level examination performance. In recent years, SIS students achieved a 97% pass rate at A level with an average of nearly 60% of grades at A*/A/ B. The university destinations of SIS former students include many of the most prestigious universities in the world, including Oxford, Warwick, Manchester, UBC (CA), Michigan Stat (US) and UNSW (AUS).

Quality Assurance & Accreditation

Accredited by The Council of International Schools, The New England Association of Schools and Colleges and The Office for National Education Standards and Quality Assessment (Public) ONESQA, SIS use English based curriculum incorporates the International Primary Curriculum (IPC) and the International Middle Years Curriculum (IMYC), and culminates in the International General Certificate of Secondary Education (IGCSE) and A Level.

Native English-Speaking Teaching Staff

SIS teaching staffs are all native English speakers mainly from the UK, while others are from USA, Canada and Australia who are experienced and well qualified to teach in their own home country. All SIS teachers are supported by teaching assistants and administration staff with the aim to provide a high quality education to students and help them to fulfill their full potential. Small class sizes help SIS teachers ensure that students benefit from receiving personal attention and perform exceptionally well in their exams, thereby increasing their academic and career opportunities.

Learning Facilities

SIS has dedicated study facilities including libraries, computer laboratories, Science laboratories and multi purpose rooms. In addition, the school has a range of sporting facilities including gym, swimming pool, covered basketball court and football pitch. Students are encouraged to participate in any extra-curricular activities in order to develop leadership and an understanding of the importance of playing a full part in the local and wider community.

One-Year A Level

Students may choose any combination of subjects from those offered by the school. They are given a considerable amount of advice over which subjects to choose depending upon their abilities, interests and both university and career aspirations. Subjects currently offered at SIS One-year A Level are: Mathematics, Further Mathematics*, Biology, Chemistry, Physics, and Business Studies and History.

SIS Principal's Welcome



Welcome to St. Stephen's International School, where the aim is to provide a truly international education whilst maintaining the values and customs that are so important to our Thai community; East certainly does meet West at St. Stephen's in the best possible way.

At both campuses, our well qualified teachers, ably supported by teaching assistants and administration staff, provide a high quality education where rigour, challenge and opportunity are constants both in the classroom and in the host of extra-curricular activities on offer.

Our curriculum supports the aim of developing students' personal qualities that will stand them in good stead in today's ever changing world. The aim is to produce young people who are concerned and constructive members of society and who have the qualifications, skills and attributes to, not only be successful themselves, but also make a difference in the lives of others.

Our campus communities are happy and caring. Whether in urban Bangkok or in the beautiful environment of Khao Yai, staff, students and parents all contribute to the special family atmosphere which is apparent to, even, the casual visitor.

Please do come and visit our school, you will be assured a very warm welcome.

John Rolfe

Principal

St. Stephen's International School, Bangkok

University Destinations of SIS Students

A Level Success



**Phoom Pentrakul
(Phoom)**

A-Level Grades:

A*A*A

University Destinations:

Warwick University (UK)

Economics



**Sarapirom Puengprasith
(Prai)**

A-Level Grades:

A*AA

University Destinations:

Bath University (UK)

Economics



**Laksika Bhuthatorn
(Noon)**

A-Level Grades:

A*A*A

University Destinations:

Nottingham University

(UK)

Medicine

Outstanding Alumni



**Apimook
Bovornchutichai (New)**

Oxford University (UK)

Ph.D

Innovative Healthcare



**Prinyapat Kiatbampen
(Moss)**

Manchester University

(UK)

Mechanical Engineering



**Tanyada Asavapakuna
(Peachy)**

Southampton University

(UK)

Civil Engineering and
Architecture

Professional Tuition Support by GK Consultants

ABBEY is proud to co-operate with one of the best tutoring service providers in Thailand. GK Consultants is a specialist educational consultancy and bespoke tutoring service that offers the highest quality personalised academic support to our students. Mr. King, the former Assistant Principal of Bangkok Patana School, has run educational consultancies in London, New York City and in Bangkok. He is a firm believer in the power of individual tutoring and has successfully guided hundreds of students in his career. His skill in educational management has enabled him to attract a team of top quality teachers who provide a variety of tutorials and courses to students of all ages.

Customised Learning Strategies

GK Consultants guarantees the finest possible academic support for all of the students in its care. Each student will be assigned a highly experienced professional educator who will design a set of customised learning strategies unique to that student's needs. Each detailed Personalised Learning Plan will provide the student with a manageable set of objectives to guide him or her towards academic success.

Individualised Private Tutoring

GK Consultants provides the highest quality individualised private tutoring enabling each student to grow academically, to increase his or her self-esteem and self-confidence and to enjoy the intellectual pursuit of learning. The tutors are skilled at creating a learning environment that stimulates a student's intellectual curiosity. Our students will be both challenged and supported and each student will know that they have a tutor who will offer both encouragement and inspiration with every step of their academic journey.

Regular and Consistent Feedback

GK Consultants provides regular and consistent feedback to parents to ensure that everyone concerned about a student's progress is aware of how that student is proceeding towards specific outcomes and goals. It is essential that the tutor, the student and the parent form a mutually supportive team each member of which plays a significant part of the learning process.

Technology Driven Learning

The GK Consultants facility is equipped with the latest technology to enable our highly skilled tutors to utilise interactive online learning activities and e-learning resources to add value to their face-to-face lessons. Many of our programmes can be combined with relevant online learning courses to extend and practise the skills and knowledge that the students acquire in the classroom and to ensure that students remain engaged and fully immersed in their studies.



Dear CIE Advanced Level Students,

It gives me great pleasure to welcome you to the GK Consultants Advanced Level tutorial programme. As you embark upon this intensive one year Advanced Level course of study in Thailand it will be important for each of you to maintain a clear focus and ensure that you are in control of each aspect of your academic studies. My team of tutors will be there to assist, guide and support you along every step of the way towards your academic success.

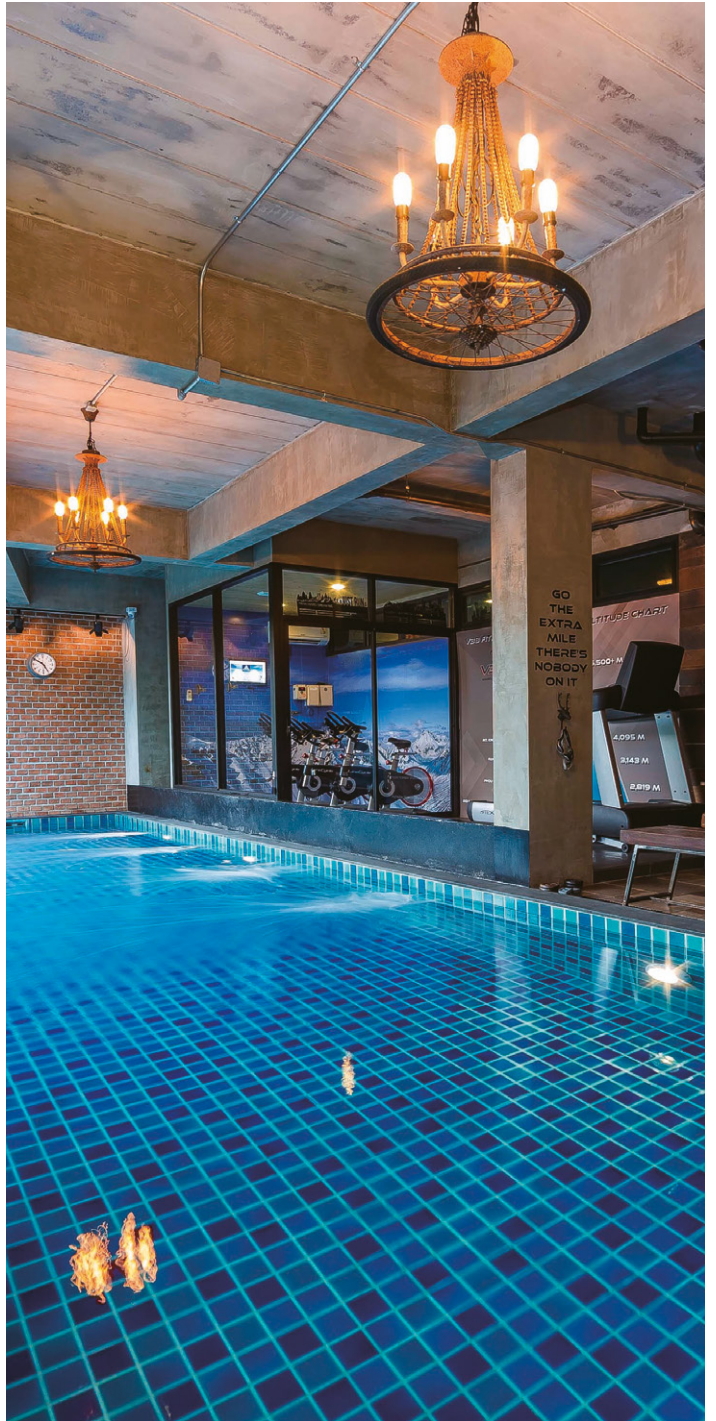
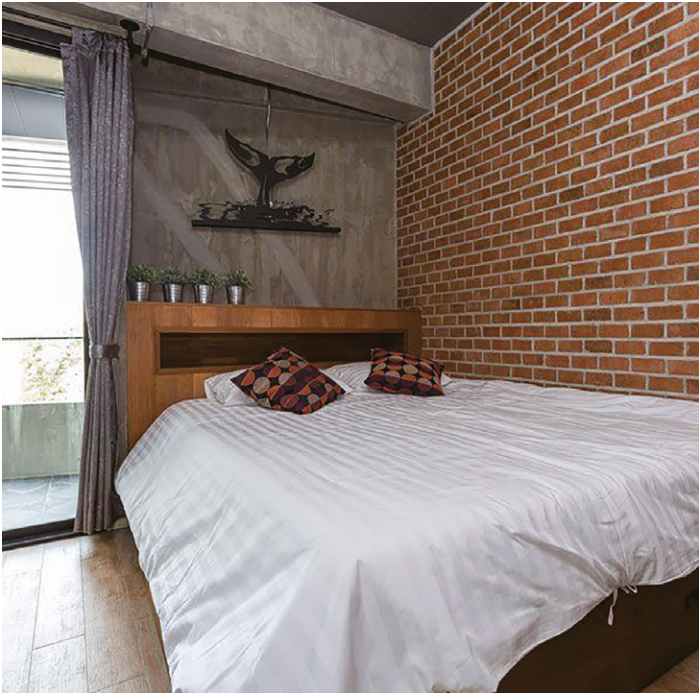
In addition to the tutorial programme, GK Consultants is in the process of designing an exciting programme of educational, cultural and fun recreational activities for many of the weekends during the academic year. This will provide a perfect balance for you during what will be a hectic year of study.

I, and my team of tutors, are really looking forward to meeting you and working with you and I feel very confident that each of you will experience the opportunity of a lifetime during your course of study in “The Land of Smiles”.

Yours sincerely,

Gary King
Executive Director
GK Consultants - Thailand







Accommodation

As a student of one of our international school partners, you will stay in a contemporary urban styled apartment complex in Bangkok arranged by a licensed travel agency.

Students will live in a shared room with en-suite bathroom. The option of private single room is available for an additional charge.

Free school transport for all students and shuttle service for weekend shopping.

Facilities and services:

- Full furnished with TV and fridge
- Co-working space
- High speed internet access
- Weekly room cleaning
- On-site laundry facilities
- 24-hour security control with CCTV
- Keycard access to premises
- Digital door lock
- On-site support staff
- Use of swimming pool and fitness centre



Catering

While taking care of students' study, we also care about their health. Everyday, our chef will prepare delicious and nutritious food to ensure our students will enjoy the meal happily and healthily.

Genuine Organic Food

The on-site restaurant in the accommodation will provide fifteen meals per week for the students, including Asian food and Western food. Most meals are made with organic ingredients.

- Mon-Fri: Breakfasts and dinners (weekday lunches served at school)
- Sat: Breakfast, lunch and dinner
- Sun: Brunch and dinner



Sample of Daily Routine

Time	Period	Mon	Tue	Wed	Thur	Fri	Sat	Sun
8:10	1	Chemistry	Maths	Biology	Chemistry	Chemistry	Tuition Workshop	Weekend Programme / Self-Study Time
9:05	2	Chemistry	IELTS	Biology	Maths	Self-Study		
10:00	Break							
10:05	3	Maths	Biology	Chemistry	IELTS	Maths		
11:00	4	IELTS	Chemistry	Maths	IELTS	IELTS		
11:55	Lunch							
12:55	5	Biology	Chemistry	Maths	Biology	IELTS	Mock Exam	
13:50	6	Biology	PE	PE	Maths	Biology		
14:45	Break							
15:00 - 16:00	Extra-Curriculum Activities (include IELTS reinforcement lesson)						Self-Study Time	
17:00 - 19:00	After-School Subject Clinics (include home-schooling for specific subjects)							

- 30 x 55 minute periods per week
- Subjects taken: IELTS, Mathematics, Chemistry, Biology



Weekend Programme

We encourage our students to participate in social and cultural activities during the weekend in order to maintain a healthy study-life balance. ABBEY is pleased to work with a dedicated team of English tutors to organise a wide range of weekend activities and programmes for our students to explore cultural and historic sites in Thailand, and most importantly enhance their interpersonal skills and English proficiency through social interaction.

Trips and Excursions on offer :

Ayutthaya Day Trip

- River cruise around Ayutthaya
- Guided tour of the best preserved ancient temples and Bang Bang Pa-In Palace

Bangkok History Highlights Day Tour

- River bus to Ratanakosin Island, Wat Phra Kaeo, Grand Palace and Wat Pho
- Guided tour of Teak Palace and Ananta Samakhom Throne Hall and Jim Thompson House
- Dinner cruise on Chao Phraya River

Cooking Lesson

- Cooking Lesson with an experienced chef
- Tour of the Khlong Toei fresh market

Programme Summary

Age	17+
Course Length	10 months (2 terms)
Course Period	From Aug 2017 to Jun 2018
Hours per Week	27.5 school hours + 15 tuition hours
School	Rasami British International School (RBIS) ; St. Stephen's International School (SIS)
Location	Bangkok, Thailand
Subjects Taken	Core subjects plus at least TWO A Level Subjects
Subjects List	<p>Core subjects: English (IELTS) & Mathematics</p> <p>Elective A Level subjects (TWO subjects): RBIS - Biology, Chemistry, Physics, Business Studies, History, Geography, History, Information and communications Technology (ICT) & Economics*</p> <p>SIS - Biology, Chemistry, Physics, Business Studies & History</p> <p>Additional A Level subjects: Further Mathematics** & Chinese**</p> <p>*Subject to the student demand **Subject to student's ability</p>
Assessments	Cambridge International AS & A Level Examinations ; IELTS
Accommodation & Catering Services	<p>En-suite share room with pantry and fridge</p> <p>Catering services: Monday – Saturday: Breakfast, lunch & dinner Sunday: Brunch & dinner</p>
Boarding Facilities	<ul style="list-style-type: none"> • Laundry services (washing, drying and ironing) included • Free Wifi connection access • Access to the swimming pool and GYM • Optional GYM fitness class with student discount
Transportation	<ul style="list-style-type: none"> • Year round return flight ticket from Hong Kong to Bangkok • Airport collection • School bus
Weekend Activities	<ul style="list-style-type: none"> • English tours are available for students at the weekend: <ol style="list-style-type: none"> 1. Ayutthaya sightseeing day tour 2. Bangkok history highlights day tour 3. Cooking lesson

Admissions

We look forward to welcoming you as a student of our 1+1 Bridging Programme. The objective of this section is to give you a full picture of the application process.

1. Complete the application form

The application forms are available in this brochure and on our website (www.abbeyedugroup.com) . Please return the completed application directly to ABBEY EDUCATION GROUP Office **OR** return the application via email or Fax.

Your application **MUST** include copies of your **OFFICAL TRANSCRIPTS & SCHOOL REPORTS** for the past 2 years and your **PASSPORT**.

2. Submit the application form

We will review your application and submit the relevant documents to the Admissions Office of the school.

3. Receive our response to your application

You may be requested to complete a range of diagnostic assessments arranged by the school such as interviews, language tests and aptitude tests.

4. Receive the confirmation of enrollment

You will receive a confirmation of enrollment from the school if your application is successful.

5. Accept the offer

You will be given a formal offer of a place after returning the letter of acceptance.

6. Pay the enrollment deposit

You will need to pay the deposit before the commencement of the programme. The pre-arrival information will be provided upon receipt of the deposit.

Key Contacts

ABBEY Education Group

Room 503, Lap Fai Building
6 – 8 Pottinger Street, Central
Hong Kong

Telephone: +852 2525 6885
Fax: +852 2810 1851
WhatsApp: +852 9512 6268
Email: info@abbeyedugroup.com
Web: www.abbeyedugroup.com
Opening Hours: Mon-Fri 10am-7pm; Sat 10am-1pm
By Appointment: Sat 1pm-6pm; Sun 10am-6pm

St. Stephen's International School, Bangkok

998 Viphavadi Rangsit Road
Lad Yao, Chatuchak
Bangkok 10900

Telephone : +66 (0) 2513 0270
Fax: +66 (0) 2513 8271
Email: info@sis.edu
Web: www.sis.edu/bangkok

RBIS Rasami British International School, Bangkok

48/2 Soi Rajavithi 2, Rajavithi Road
Samsennai, Phayathai
Bangkok 10400, THAILAND

Telephone : +66 (0) 2644 5291-2
Fax: +66 (0) 2640 9527
Email: rbis@rbis.ac.th
Web: www.rbis.ac.th

GK Consultants

Elysian House,
14/1 Methi Niwet Village,
Sukhumvit Soi 24,
Klongtan, Klongtoey,
Bangkok 10110

Telephone : +66 (0) 98-585-7426
Email: info@gkconsultants.org
Web: www.gkconsultants.org

ABBAY

EDUCATION GROUP

Aim Even Higher